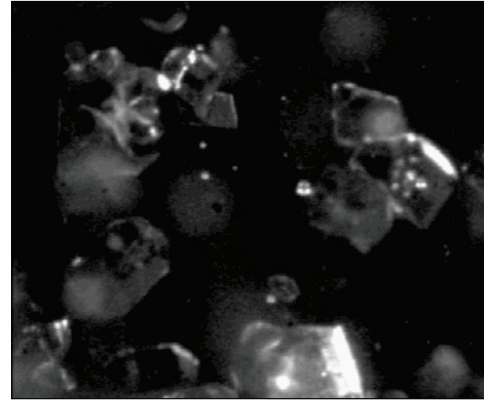


PROCESS TECHNOLOGY

SUGARSCOPE™ PARTICLE SIZING SYSTEM



CANTY ADVANTAGE

The CANTY SUGARSCOPE™ is a high speed video system that captures and displays live video images of sugar crystals in a sugar pan under process conditions for blur-free, flicker-free process monitoring. The SUGARSCOPE™ features a unique, high magnification lens that views particles as small as 1 micron, manual zoom controls to widen the view angle to 1000 microns. No sampling is required - the process is continually monitored under pressure and temperature.

PARTICLE SIZING

- Crystal Distribution By Major, Minor Diameter, Area, Perimeter Available with Vector System.
- Crystal Size & Shape
- Crystal Count
- Density Of Crystals
- Detection Of Seeding Problems
- Automated Temperature & Vacuum Controls During Crystal Growth
- Increased Efficiency During Filtration

APPLICATIONS

- Crystallizers
- Fermentation Applications - Optical Density/Cell Count
- Mining-Flotation Cells and Thickener Tanks
- Web Inspection
- Fiber-Glass or Polymer Diameter

FEATURES

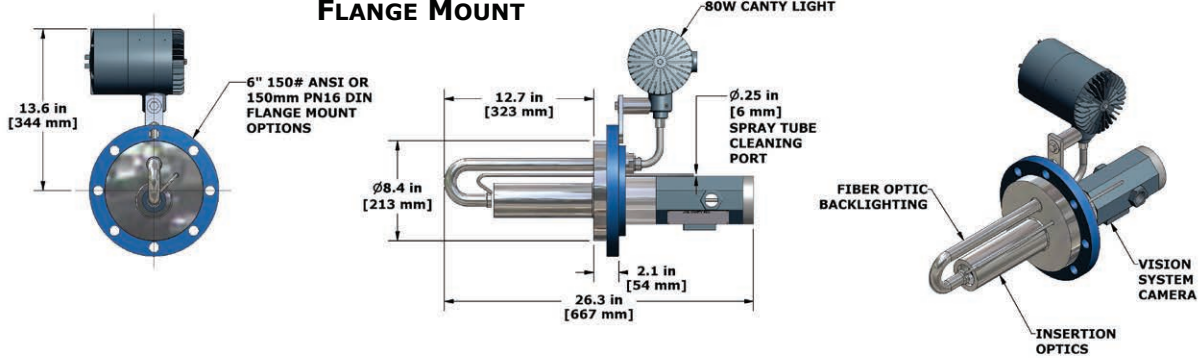
- Remotely view sugar growth from the comforts of a control room
- Fused Glass, High Pressure / Temperature Seal From process
- High resolution CCD cameras - available in Ethernet Output, B&W and Color
- NEMA 4 / IP66 Rated / Explosion Proof / Flame Proof
- 1 - 1000 micron crystals
- Adjustable Magnification Microscopic Zoom Lens
- Single Nozzle viewing/illuminating
- Canty Vision Client software comes standard with Ethernet version for particle size analysis
- Output options- OPC, 4-20mA

SPECIFICATIONS

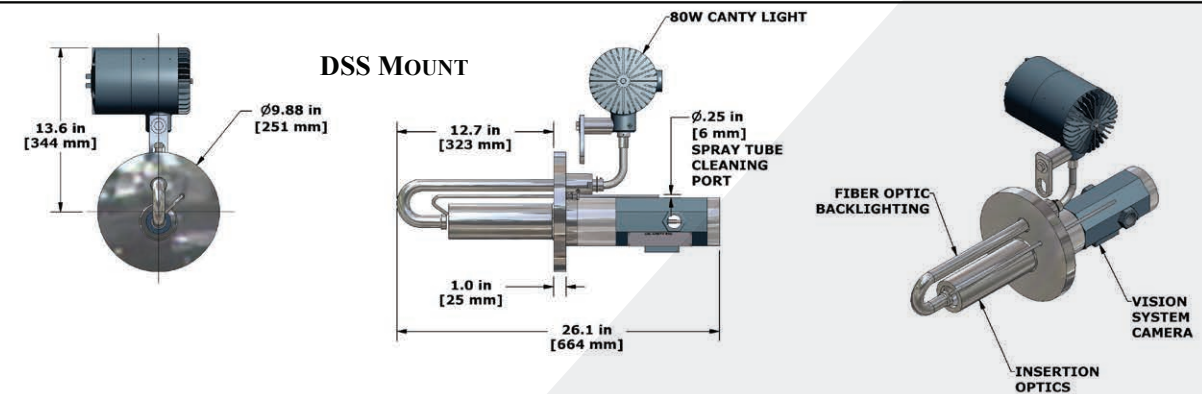
Video Format:.....Gigabit Ethernet, EIA, CCIR, NTSC, and PAL
 Shutter Speed:.....Variable up to 10 micro Seconds
 Ambient Temp:.....-30° to 50°C
 Input Power:.....120V AC 60Hz or 230V AC 50Hz
 Cable:.....Cat6 Ethernet or RG59/U, 75Ω coaxial cable suitable CCTV applications
 Environmental Ratings:..NEMA 4, IP66, EXP, FP

DIMENSIONAL INFORMATION

FLANGE MOUNT



DSS MOUNT



Ordering Information

HOW TO ORDER: Select the appropriate symbols and build a part number as shown:

EXAMPLE:

SUG - 6 F 1 A 1 V

