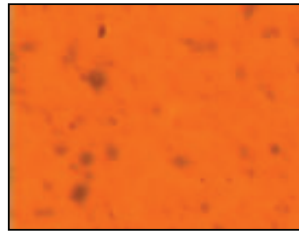
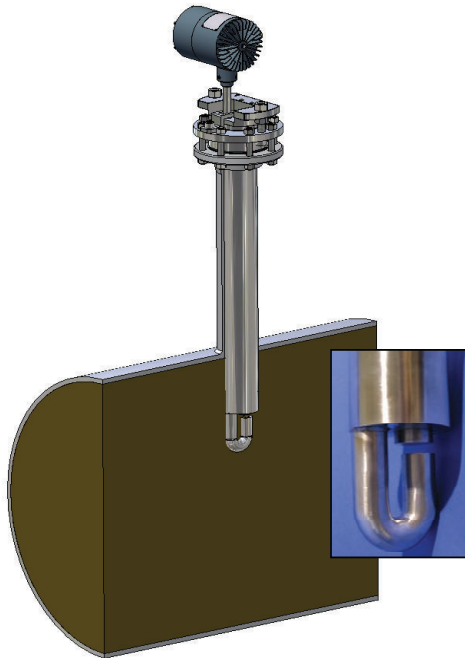
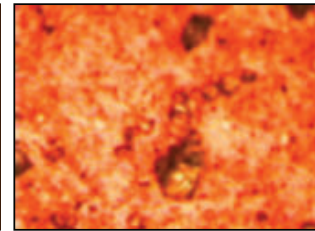


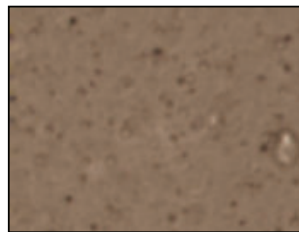
OIL IN WATER/WATER IN OIL/MULTIPHASE OIL MEASUREMENT SYSTEM



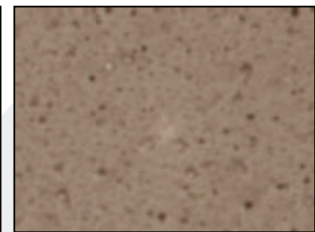
Untreated Crude



Treated Crude



Crystalline Calcium Particulate



Polymer Formation

ADVANTAGES

- Real Time Analysis, No Sampling
- Ethernet Connectivity - Wired Or Wireless
- WP / IP66, Explosion Proof / Flame Proof Design
- Fused Glass, High Pressure / Temperature Seal
- Self Cleaning Design
- Various Outputs Options Including OPC, 4-20 mA Current Loop

KEY FEATURES

- Explosion proof / Flame proof & WP / IP66 Microscopic Camera / Light
- .7 Micron Particles & Larger
- 100% Oil Down To PPB Level
- Sand, Oil, Gas, Water
- FM, CSA, ATEX
- No Purge Needed
- 4" ANSI, 100mm DIN Mounting Options

THE CANTY ADVANTAGE

The Canty Particle Probe™ has been engineered to offer the user a means by which a liquid is analyzed while under varying pressures, temperatures and flow rates. The Particle Probe™ offers continuous, microscopic, non-destructive viewing and provides multiphase analysis of oil in water, water in oil with two dimensional results. The vision system with integral lighting features precision optics designed to enhance the image prior to display or analysis. The image sensor is a high resolution / high speed Ethernet camera coupled to a microscopic lens system. The system offers focus ability, variable lighting, and high magnification objective lenses to cover a range of sizes. All Particle Probes™ feature the Fuseview™ window as the product contact barrier. Our unique fused glass windows far exceed all other glass windows in safety and performance. The fused glass provides a flush finish, without the pocketing found in other mechanical seals which disturb the flow pattern and particle distribution and are the major cause of flow and build-up problems.

Ordering Information

HOW TO ORDER: Select the appropriate symbols and build a part number as shown:

EXAMPLE:

VOE746A1C

Video Format/Input Power

- E - Gigabit Ethernet (Color) 650(H) X 490(V) pixel array / 120 VAC
- F - Gigabit Ethernet (B&W) 650(H) X 490(V) pixel array / 120 VAC
- G - Gigabit Ethernet (Color) 650(H) X 490(V) pixel array / 230 VAC
- H - Gigabit Ethernet (B&W) 650(H) X 490(V) pixel array / 230 VAC

Environmental Rating

- 6 - WP / IP
- 7 - EXP / FP

Connection

- 4 - 4" ANSI, 150# Flange
- 7 - 100mm 16 bar DIN
- All systems feature a fixed 33" [839mm] Insertion Probe.
- Additional Sizes And Pressure Ratings Available.

O-Ring Material

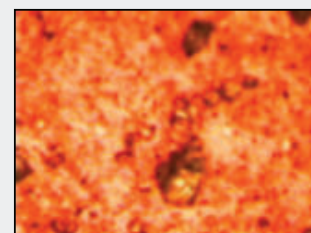
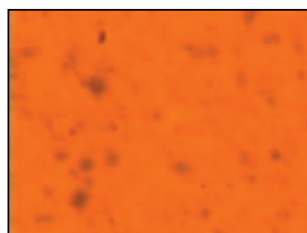
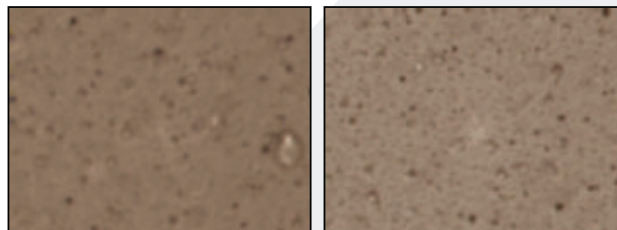
- B - Viton®
- C - Buna
- D - EPDM

Wetted Material

- 1 - 316L Stainless Steel*
- 2 - Hastelloy® C276 Or Equal
- 3 - Hastelloy® C-22® OR Equal

* Canty reserves the right to upgrade to Hastelloy® C-family of alloys or equal at their own cost.

Optional Retraction System Available. Consult Factory.



Reading Office

Cutbush Park, Danehill, Lower Earley,
Reading, Berkshire. RG6 4UT. UK.
Tel: +44 (0)118 9311188
Email: info@able.co.uk

Aberdeen Office

Unit 6 Airside Business Park, Kirkhill Industrial Estate,
Dyce, Aberdeen. AB21 0GT. UK.
Tel: +44 (0)1224 725999
Email: ab@able.co.uk

Internet: www.able.co.uk
e-procurement: www.247able.com
Registered in England No: 01851002
VAT No: GB 417 2481 61

