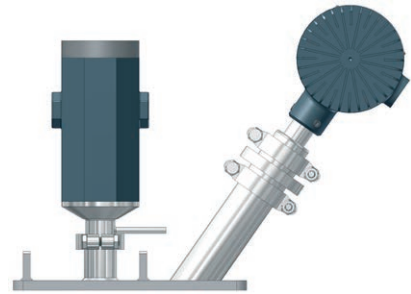
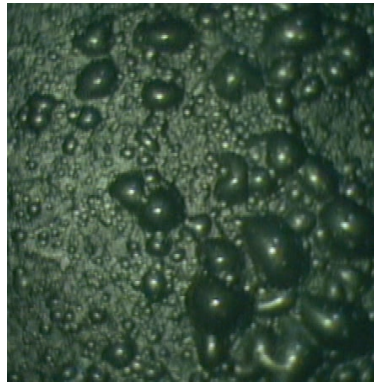
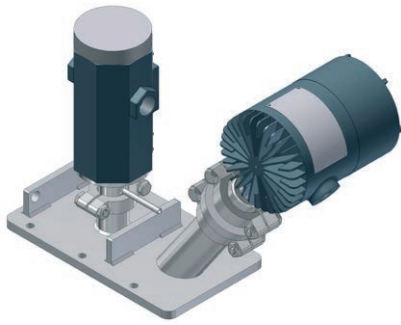


PROCESS TECHNOLOGY

Mud Flow and Quality Analyzer



HOW IT WORKS

The Canty Mud Flow Camera System is set up to view the mud going down the pipe after it rises from the drill pipe. The rugged industrial turn key system mounts to the top of the pipe and allows for non contact measurement of flow and level of the mud.

The combination of a Canty Fiber Optic Light with the digital Ethernet camera allows for optimal view into this dirty dark environment for visual verification of the flow and quality.

CANTYVISIONCLIENT™ Software is used to analyze the level and the measurement results can be outputted through 4-20mA or OPC to the control system.

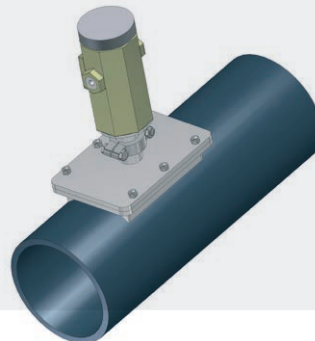
This system is a replacement for the Mud Flow Flapper/Paddle style units.

CANTY LIGHTS MAKE IT POSSIBLE

The key to Canty Camera/Light combination systems is the Canty light. Canty uses fiber optic light guides to focus cool, effective light into a process vessel or area. Cool light eliminates product bake-over on the viewing window. Fiber optic light guides have been specifically designed to work in conjunction with cool light to maximize the light transmission into the vessel. The resulting live, remote video image from this illumination is unparalleled!

FEATURES

- Non Contact
- Low Maintenance since there are no moving parts
- Real Time Analysis
- Visual Verification
- Remote Access
- FM Explosion proof or ATEX Flame Proof
- Live View of Mud Flow
- 10 time more accurate than the flapper
- Non Clogging/ Non Intrusive
- Spray ring to clean



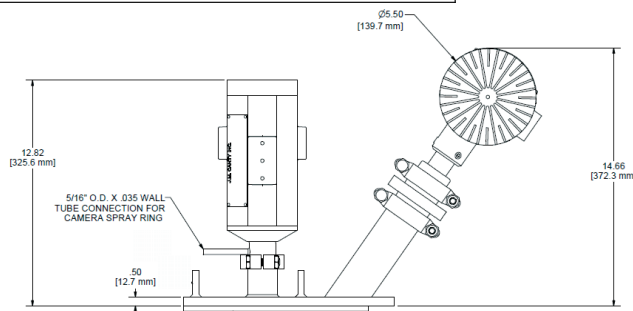
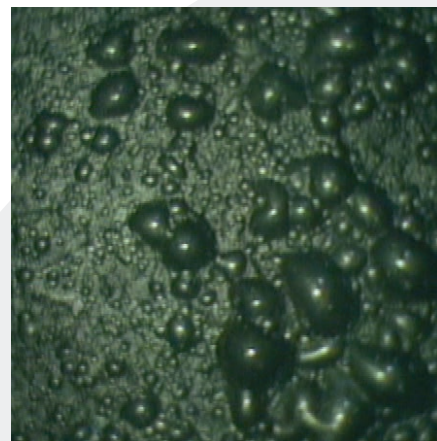
Ordering Information

HOW TO ORDER: Select the appropriate symbols and build a part number as shown:

EXAMPLE:

VMFB1101-1

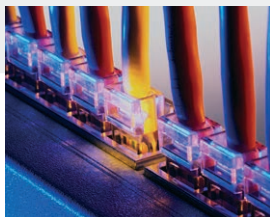
Wetted Material	Plate
B = 316 S.S.	1 = Standard (12 by 7 inches)
Camera/ Light Options	Spray Ring
1 - 1SRDO (Toroidal light) 2- Remote Flex Bundle lighting (72" TYP.)	1 = Spraytube
ENVIRONMENTAL RATING	
1 - Explosion Proof (120 Volts) 2 - Flame Proof (240 Volts) 2 - WP (120 Volts) 4- IP (240 Volts)	



OUTPUT OPTIONS

OPC - Open Connectivity for Process Control

Canty provides both an OPC client and server to connect CANTYVISIONCLIENT™ Software to our customers' digital control systems. This comes standard with CANTYVISIONCLIENT™! (Please see data sheet TA10560-1 for complete information on this offering).



Ethernet Output Module

Canty also offers an Ethernet 4-20mA current loop CANTYVISIONCLIENT™ across a network, and convert it to a 4-20mA current loop signal. This is a separate DIN rail mounted module that can be purchased as an accessory. (Please see data sheet TA9688-1 for complete information on this offering).

