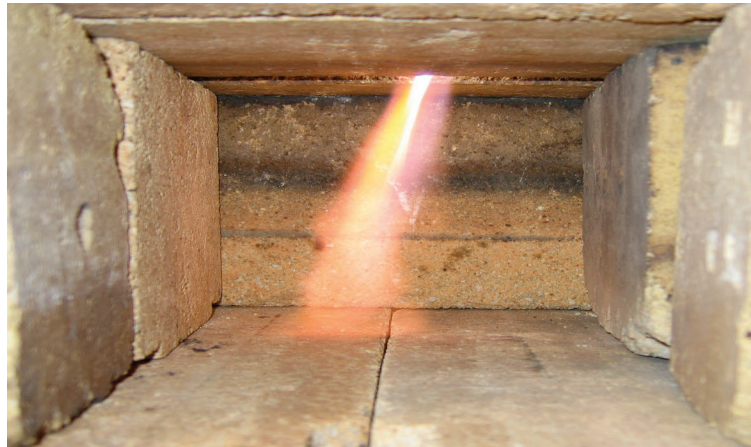


# CANTY

## PROCESS TECHNOLOGY

### MINITEMP™ HIGH TEMPERATURE CAMERA



#### UNIQUE DESIGN

Canty Minitemp™ camera systems are a low cost, low maintenance, portable alternative to traditional high temperature cameras. Our unique design allows the unit to be easily moved from location to location in just minutes.

#### APPLICATIONS

- Oil and Gas Fired Power Plants
- Energy From Waste Furnaces
- Glass Furnaces and Vitrification Applications
- Steel Mills
- Low NOX Burner Monitoring
- Coal Fired Power Plants

#### THE COMPLETE PACKAGE

Canty can meet all your needs! Standard equipment on every camera includes: power supply, high resolution B&W CCD camera, prefocused lens and 316L Stainless Steel housing. What's more - all wiring and maintenance are external. Minitemp™ portable cameras require just 8 SCFM minimum of clean, dry cooling air to cool the camera internal electronics.

#### FEATURES

- Compact Design
- Retrofits Into Existing Furnaces – Mounts In Most Existing Camera Ports Or Viewports
- Up to 2000° F Capabilities – Air Cooled
- High Resolution B&W CCD Cameras – Available In US Or European Video Formats
- Remotely View Your Process From The Comforts Of A Control Room
- Easy To Install Or Move

#### SPECIFICATIONS

CCD Sensors:	1/2" Format. 768(H) x 494 (V) Pixels 1/3" Format. 768 (H) x 484 (V) Pixels
Video Output:	1.0 V p-p, 75 typ.
Lens View Angles:	56° (H) X 43° (V) 42° (H) X 32° (V)
Current Req.:	500 mA typical
Cable:	RG 59/U, 75 Ω coaxial cable suitable for CCTV applications
Compatible Process Connections:	3" 150# ANSI Flange (Ø2.875 unit)
(Not Included)	4" 150# ANSI Flange (Ø3.875 unit) 80 mm DIN 16 Bar Flange (Ø2.875 unit) 100 mm DIN 16 Bar Flange (Ø3.825 unit)

**CANTY**

JM Canty Inc

Buffalo, NY USA

Ph: (716) 625 4227

Fax: (716) 625 4228

JM Canty Intl Ltd

Dublin, Ireland

Ph: + 353 (01) 882 9621

Fax: +353 (01) 882 9622

[www.jmcanty.com](http://www.jmcanty.com)

Document P/N: TA7379-1 Rev. 4

## Ordering Information

HOW TO ORDER: Select the appropriate symbols and build a part number as shown:

**EXAMPLE:**

# MHT - A 1 S 1 A 1 A

SYSTEM VIDEO FORMAT

- A - EIA (U.S. B&W)
- B - NTSC (U.S. Color)
- C - CCIR (European B&W)
- D - PAL (European Color)

CAMERA POWER SUPPLY OPTIONS

- 1 - [Non WP or EXP Power Supply \(120V AC/60Hz Input\)](#)
- 2 - [Non WP or EXP Power Supply \(230V AC/50Hz Input\)](#)
- 5 - [Power Supply in WP NEMA 4X Enclosure \(120V AC/60Hz Input\)](#)
- 6 - [Power Supply in IP 66 Enclosure \(230V AC/50Hz Input\)](#)
- 9 - No Power Supply

SYSTEM DIAMETER

- S - Ø2.875
- L - Ø3.875

OPTICAL SHIELDS

- A - Clear Quartz
  - B - # 4 Shade
  - C - # 8 Shade
  - D - #10 Shade
  - E - #12 Shade
- Note: Each camera comes with a shield kit that contains 1 each of A,B,C,D & E. The option selected above will be factory installed.

MATERIAL OF CONSTRUCTION FOR SHELL

- 1 - 304L Stainless Steel

MOUNTING ACCESSORIES

- A - None

SYSTEM VIEW ANGLE

- 1 - 56° H x 43° V
  - 2 - 42° H x 32° V
- (Note: Option 1 is not available with System Diameter "S" and System Format "B" or "D")

