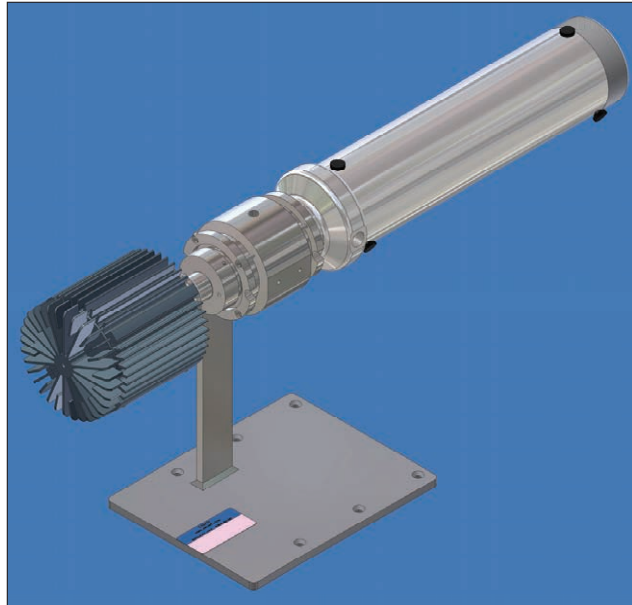


PROCESS TECHNOLOGY

TRUFLOW™ PARTICLE SIZING SYSTEM

The Canty TRUFLOW™ has been engineered to offer the user a means by which a liquid is analyzed while under varying pressures, temperatures and flow rates. It offers sample or continuous, microscopic, non-destructive viewing and provides particle size analysis with two dimensional results when used in conjunction with the CantyVisionClient™ Software. The vision system, with integral lighting, features precision optics designed to enhance the image prior to display or analysis. The image sensor is a high resolution / high speed CCD camera coupled to a microscopic lens system. The system offers zoom and focus ability, variable lighting, and multiple objective lens packages to cover a range of sizes. The TRUFLOW™ features the FUSEVIEW™ window as the product contact barrier. Our unique fused glass windows far exceed all other glass windows in safety and performance allowing for high pressure ratings. The fused glass provides a flush finish, without the pocketing found in other mechanical seals which disturb the flow pattern and particle distribution and can damage or deform particles.



FEATURES

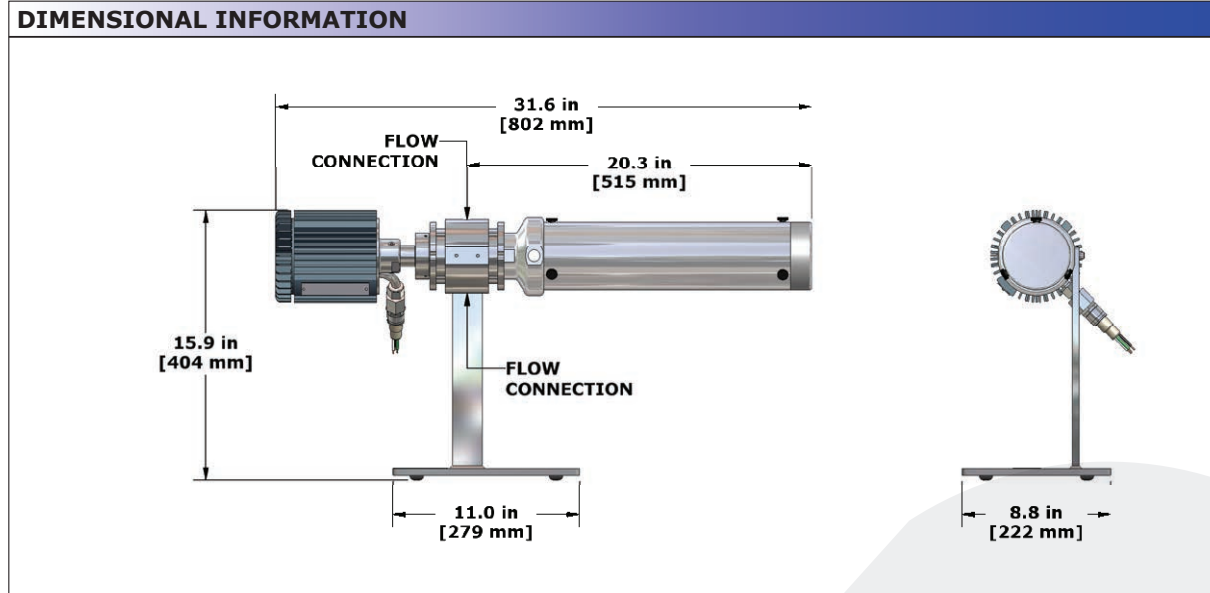
- Particle Size, Shape and Distribution with Real Time Analysis
- Fused Glass Pressure Barrier Standard
- Rated 500 PSI @ 400 Deg. F., Options through 6,000 PSI.
- Cold Back Light Eliminates Heating of the Sample Even at High Outputs which are Required for High Shutter Speed Viewing.
- CCD Based High-Speed Imaging Device
- Adjustable Gap Option
- Regulated Temperature Option
- On-Line or Lab Plus (remote control)
- 1/4 Inch NPT Connections Standard

APPLICATIONS

- Multiphase Oil Characterization
- Polymer Bead Growth and Shape Analysis
- Mining and Aggregate Particle Size
- Centrifuge Effluent and Screen Break Detection
- In-Line Particle Size for Process Control
- Gel, Emulsion and Bubble Classifier
- Percent Solids / Turbidity
- End Product Quality Control and Lot Certification
- Crystal Growth Analysis
- Replace Laser and Sieve with Two Dimensional Distribution by Shape

SPECIFICATIONS

Video Formats: Gigabit Ethernet, EIA, CCIR, NTSC and PAL
 Shutter Speed: Variable Up to 10 micro Seconds
 Ratings: Lab, NEMA 4 Weather Proof, Explosion Proof or Flame Proof
 Particle size: .7 micron to 3000 micron
 Connections: NPT, Tube or Sanitary
 Input power: 120 V AC 60Hz or 230 V AC 50Hz
 Cable: RG59/U, RG11/U, RG6/U Coaxial Cable Suitable for CCTV Applications is Recommended for Analog Cameras. Gigabit Ethernet Cameras require CAT6 or Better Cabling



Ordering Information

HOW TO ORDER: Select the appropriate symbols and build a part number as shown:

EXAMPLE:

TRU - A G 1 K 1 1 B 1 1 A Z

CONNECTION TYPE A - 1/4" Female NPT B - 1/2" Female NPT D - 1/4" Swagelok Tube Connection E - 1/2" Swagelok Tube Connection F - 1/2" Sanitary (Triclamp)	O-RING MATERIAL A - Viton® B - Buna C - EPDM D - Silicone E - Kalrez® F - Chemraz®																					
VIDEO SYSTEM FORMAT A - EIA (U.S. B&W) 640x480 B - NTSC (U.S. Color) 640x480 C - CCIR (European B&W) 768x576 D - PAL (European Color) 768x576 E - Gigabit Ethernet (B&W) 650x490 F - Gigabit Ethernet (Color) 650x490 G - Gigabit Ethernet (B&W) 1600x1200 H - Gigabit Ethernet (Color) 1600x1200																						
ENVIRONMENTAL RATING 1 - Lab Unit (General Purpose Enclosure) 2 - NEMA 4 Weatherproof, IP 66 3 - Lab Plus (Ethernet Remote Control) 4 - Explosion Proof (U.S. 120V) or Flame Proof (Europe 230V)	THERMAL REGULATION 1 - None 2 - External Band Heaters																					
SYSTEM ILLUMINATION K - Backlight L - Darkfield M - Cross Polarized N - Amplified / Focused P - Phase Contrast Q - Front & Backlight When picking options K, L, or M, all three are included and the selected option will be factory installed.	FLOW PATH SPACING CONTROL 1 - Variable Gap (5µm-3,175µm), Adjustable with Sample Present 2 - Fixed Gap (3,175µm), 2" Wide Cell Width 3 - Fixed Gap (3,175 µm), 1/2" Wide Cell Width																					
PARTICLE SIZE RANGE <table border="1"> <thead> <tr> <th>P.S. View</th> <th>P.S. Measure</th> <th>Pixel Array</th> </tr> </thead> <tbody> <tr> <td>1 - (.2µm* - 2400µm)</td> <td>(.4µm*-480µm)</td> <td>@ 1600x1200</td> </tr> <tr> <td>2 - (.3µm* - 3400µm)</td> <td>(.6µm*-680µm)</td> <td>@ 1600x1200</td> </tr> <tr> <td>3 - (.4µm* - 2,175µm)</td> <td>(1µm - 435µm)</td> <td>@ 650x490</td> </tr> <tr> <td>4 - (.6µm* - 3,075µm)</td> <td>(1.5µm - 615µm)</td> <td>@ 650x490</td> </tr> <tr> <td>5 - (.5µm* - 2,175µm)</td> <td>(1.5µm - 435µm)</td> <td>@ 640x480/768 x 576</td> </tr> <tr> <td>6 - (.8µm - 3,075µm)</td> <td>(2.0µm - 615µm)</td> <td>@ 640x480/768 x 576</td> </tr> </tbody> </table> When picking options [1 or 2], [3 or 4], [5 or 6], the system includes a second lens for the other range in the bracket as well. The selected option will be factory installed. For larger sizes, please refer to the INFlow™ sheet, TA10601-1.	P.S. View	P.S. Measure	Pixel Array	1 - (.2µm* - 2400µm)	(.4µm*-480µm)	@ 1600x1200	2 - (.3µm* - 3400µm)	(.6µm*-680µm)	@ 1600x1200	3 - (.4µm* - 2,175µm)	(1µm - 435µm)	@ 650x490	4 - (.6µm* - 3,075µm)	(1.5µm - 615µm)	@ 650x490	5 - (.5µm* - 2,175µm)	(1.5µm - 435µm)	@ 640x480/768 x 576	6 - (.8µm - 3,075µm)	(2.0µm - 615µm)	@ 640x480/768 x 576	WETTED METAL MATERIAL B - 316L Stainless Steel D - Hastelloy® C276 or equal E - Hastelloy® C-22® or equal
P.S. View	P.S. Measure	Pixel Array																				
1 - (.2µm* - 2400µm)	(.4µm*-480µm)	@ 1600x1200																				
2 - (.3µm* - 3400µm)	(.6µm*-680µm)	@ 1600x1200																				
3 - (.4µm* - 2,175µm)	(1µm - 435µm)	@ 650x490																				
4 - (.6µm* - 3,075µm)	(1.5µm - 615µm)	@ 650x490																				
5 - (.5µm* - 2,175µm)	(1.5µm - 435µm)	@ 640x480/768 x 576																				
6 - (.8µm - 3,075µm)	(2.0µm - 615µm)	@ 640x480/768 x 576																				
	INPUT POWER 1 - 120 V AC / 60Hz 2 - 230 V AC / 50Hz																					

* Verify Required Wavelength of Light for Application.
Visible Light Allows for Particles .7 Micron(µm) and Larger.

Reading Office

Cutbush Park, Danehill, Lower Earley,
Reading, Berkshire. RG6 4UT. UK.
Tel: +44 (0)118 9311188
Email: info@able.co.uk

Aberdeen Office

Unit 6 Airside Business Park, Kirkhill Industrial Estate,
Dyce, Aberdeen. AB21 0GT. UK.
Tel: +44 (0)1224 725999
Email: ab@able.co.uk

Internet: www.able.co.uk
e-procurement: www.247able.com
Registered in England No: 01851002
VAT No: GB 417 2481 61

