

**PROCESS TECHNOLOGY**

**LAB SOLIDSIZER™ with Color Analysis**



**THE CANTY ADVANTAGE**

LAB SOLIDSIZER™ with Color Analysis is accomplished by using the fundamentals of the RGB and YUV color scale system. A Canty Lab analyzer is used to continually capture images as the flow of product moves over a vibratory feeder. The camera mounted over the stream is surrounded by a ring light for illumination of the stream. Since specs are a different color from the product they appear in, they are extremely easy for CANTYVISIONCLIENT™ software to differentiate. When a color speck occurs, the particle is easily detected and an optional 4-20mA output option can be provided. The CCD camera is connected to a Canty Vector System image processor for analysis.

**APPLICATIONS**

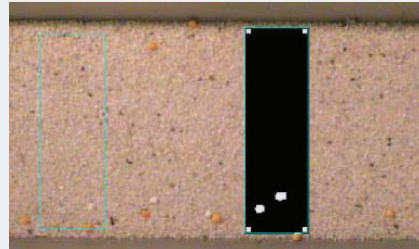
- Pharmaceutical powders
- Polymer pellets and beads
- Agricultural products
- Aggregates
- Detergents
- Glass bead applications
- Food products
- Agglomeration control
- Spray dryers and fluid bed applications
- End product Q.C. and lot certification
- Many, Many more!

**FEATURES**

- Defect particle distribution by color, major, minor diameter, area, perimeter available with Canty Vector System
- Scale for calibration of sample
- Adjustable lens magnification (sub micron to macro size in inches)
- Uniform surface lighting
- Shape Analysis
- External video connectors for signal processing by Canty Vector System (optional)
- Optional light filters available for wavelength sensitive materials

**SPECIFICATIONS**

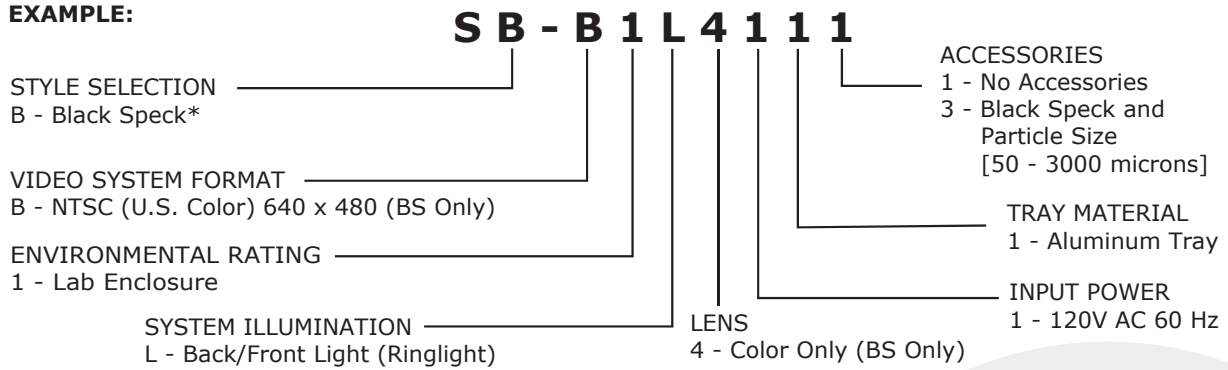
- Power: 120 VAC / 60 Hz (230VAC / 50 Hz)
- Shutter Speed: variable up to 1/100,000 sec



**Ordering Information**

HOW TO ORDER: Select the appropriate symbols and build a part number as shown:

**EXAMPLE:**



\*Application also includes Color Speck

