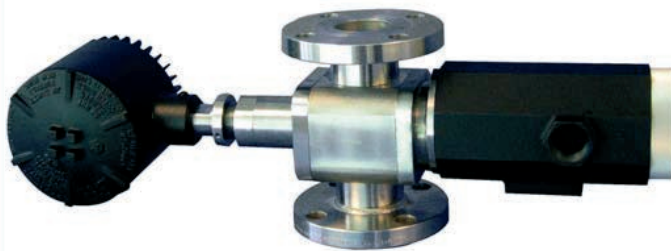


Inflow™

OIL IN WATER / WATER IN OIL / MULTIPHASE OIL / PRODUCED WATER/ TAR SANDS MEASUREMENT SYSTEMS



THE CANTY INFLOW

Combining the latest in CCD Ethernet camera technology, with Canty fused glass technology, high intensity lighting and CANTYVISIONCLIENT™ software, the IN-FLOW™ provides real time inline analysis (size & concentration) of Oil and Solids (Sand) in Water, or Water and Solids in Oil.

JM Canty's vision based technique works on the fundamental principle of presenting the fluid (water / oil stream) between a high intensity light source and microscopic camera. The captured images are then analysed by the CANTYVISIONCLIENT™ software, where the suspended particulate (oil, water, solids, gas bubbles) is measured under a number of different parameters to provide size, shape and concentration data. Software filters (size / shape) are applied so oil / water, solids, and air bubbles are individually & simultaneously analysed.

FEATURES

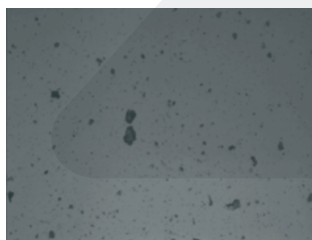
- Ethernet Connectivity (Remote Monitoring / Support)
- Intuitive Software Interface
- Data Outputs in the Form of Excel Database
- Control Output Options via OPC / 4-20mA
- Fused Glass Process Barrier
- High Intensity Lighting
- Integral Jet Spray Ring (Cleaning)
- FM EXP / ATEX FP Options

ADVANTAGES

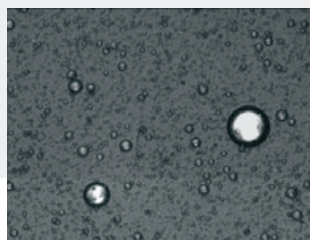
- Real Time Inline Measurement (No Sampling)
- Centre Pipeline Measurement (Most Representative)
- Visual Verification
- Simultaneous Measurement of Oil / Water and Solids
- Flow Rates to 9ft/s (water stream)
- Up to 5% Particle Concentration (Higher for Droplet Size Measurement Only)
- +/-1% Accuracy of Calibrated Scale

COMMON APPLICATIONS

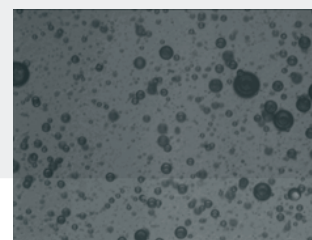
Oil in Water: Environmental Regulations, Separation Equipment Performance Analysis & Optimization
 Solids in Water: Avoid Well Plugging (WFI), Limit Equipment & Pipeline Clogging / Erosion, Separation Equipment Performance Analysis & Optimization
 Water / Solids in Oil: Adherence to Pipeline & Refinery Standards, Limit Equipment & Pipeline Erosion, Separation Equipment Performance Analysis & Optimization



SAND IN WATER



WATER IN OIL



OIL IN WATER

Reading Office

Cutbush Park, Danehill, Lower Earley,
Reading, Berkshire. RG6 4UT. UK.
Tel: +44 (0)118 9311188
Email: info@able.co.uk

Aberdeen Office

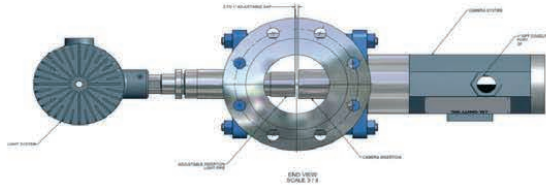
Unit 6 Airside Business Park, Kirkhill Industrial Estate,
Dyce, Aberdeen. AB21 0GT. UK.
Tel: +44 (0)1224 725999
Email: ab@able.co.uk

Internet: www.able.co.uk
e-procurement: www.247able.com
Registered in England No: 01851002
VAT No: GB 417 2481 61

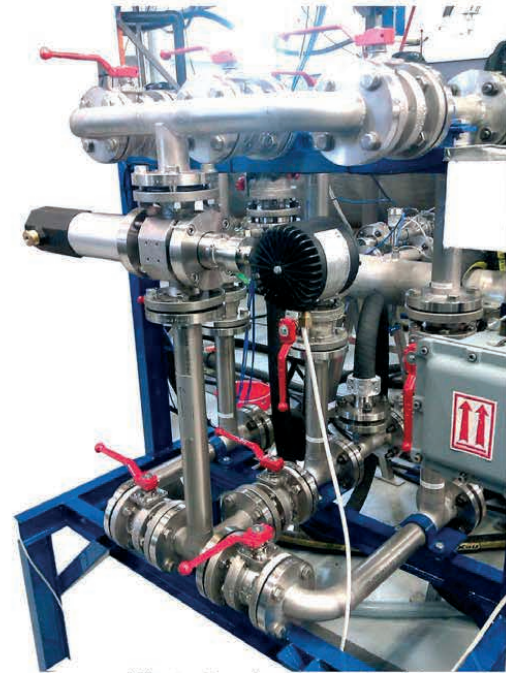
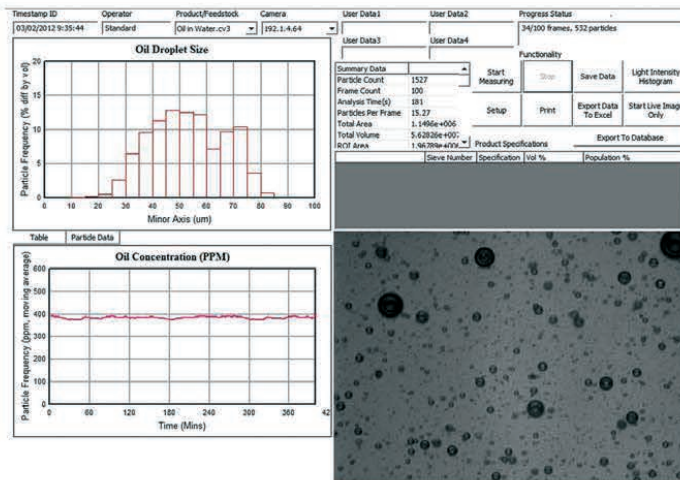


Inflow™

**OIL IN WATER / WATER IN OIL /
MULTIPHASE OIL / PRODUCED WATER/
TAR SANDS MEASUREMENT SYSTEMS**



OPERATOR SCREEN



*Illustration above property of Ascom BV

HOW TO ORDER: Select the appropriate symbols and build a part:

V O 6 C 1 1 1 A A 1 V

APPLICATION O - Oil In Water M - Multiphase W - Water in Oil	INTERNAL SEAL MATERIAL B - BUNA V - VITON® S - SILICONE E - EPDM	N - NEOPRENE K - KALREZ® C - CHEMREZ®
SYSTEM CLASSIFICATION 6 - Standard Optics	ENVIRONMENTAL RATING 1 - NEMA 4 WEATHERPROOF 2 - IP 66 3 - EXPLOSION PROOF 4 - FLAME PROOF	
CONNECTION TYPE B - Swagelok® C - Flange (ANSI/DIN) E - NPT (Female)	ANSI OR DIN PRESSURE RATING / FLANGE PATTERN ANSI A - 150 PSI B - 300 PSI C - 600 PSI DIN D - 10 BAR E - 16 BAR F - 25 BAR CONSULT FACTORY FOR PRESSURE RATING UP TO 10,000 PSI.	
CONNECTION SIZE 0 - 1/2" (12.7mm) 1 - 1" (25mm) 5 - 1.5" (38mm) 2 - 2" (50mm) 3 - 3" (80mm)	4 - 4" (100mm) 6 - 6" (150mm) 8 - 8" (200mm) 9 - 10" (254mm) A - 12" (305mm)	INPUT POWER A - 120 V AC / 60Hz / 250W B - 230 V AC / 50Hz / 250W
WETTED METAL MATERIAL 1 - 316L Stainless Steel 2 - Hastelloy® C276 or equal 3 - Hastelloy® C-22® or equal 4 - Carbon Steel	NON WETTED METAL MATERIAL (PRESSURE BEARING) 0 - Carbon Steel 1 - 300 Series Stainless Steel	