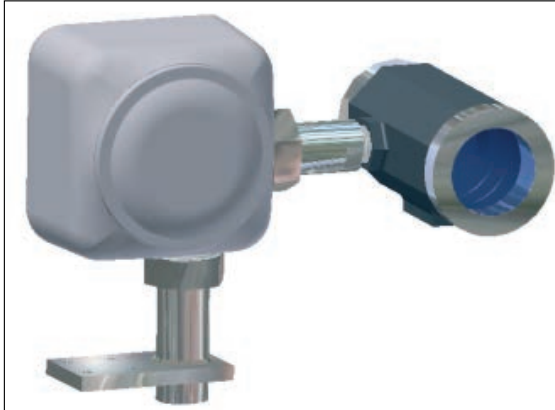


**PROCESS TECHNOLOGY**

**EXPLOSION PROOF PAN & TILT WITH INTEGRAL CAMERA**



**APPROVALS**

Canty pan & tilt systems have been designed for use in hazardous areas in accordance with explosion proof, and flame proof requirements.

- Class I, Div. 1, Groups B, C & D
- Class II, Div. 1, Groups E, F & G, & NEMA 4 areas
- EEx d IIC T6, IP66

**THE CANTY ADVANTAGE**

Canty explosion proof, flame proof pan and tilt systems have been engineered for the rigorous requirements of industrial applications. Every component in a Canty pan & tilt system has been specifically chosen for quality, performance and reliability.

- Fused Glass - For Harsh Industrial Environments
- Heavy Duty, Rugged Enclosures.
- Compact Design
- 120 V or 230 V Models
- Completely Pre-Wired
- Indoor, Outdoor Operation

All pan & tilt systems are fully compatible with any Canty camera. We feature a complete line of fixed lenses, zoom lenses, switches, monitors, amplifiers, VCRs, surveillance systems and process control equipment.

Please consult the factory, or your local Canty representative for more details.

**SPECIFICATIONS**

**ELECTRICAL REQUIREMENTS**

- Operating Voltage: 120 V AC, 60 Hz (US ) or 230 V AC, 50 Hz (Europe)
- Current Requirements: .35 A max running  
.50 A max starting
- Motors: Single phase induction type, reversible
- Connectors: 15 conductor, 16 AWG pigtails provided
- Controller: Desk top mounted pan & tilt controller included

**MECHANICAL SPECIFICATIONS**

- Pan: Speed: 6 degrees / second  
Movement: 0-340 degrees  
Torque: 42 inch pounds (4.7 N-m)
- Tilt: Speed: 6 degrees / second  
Movement: +/- 90 degrees  
Torque: 42 inch pounds (4.7 N-m)
- Stop Limits: Cam guided
- Weight: 30 pounds (13.6 Kg)
- External Construction: Cast aluminum body with stainless steel fittings
- Maximum Temperature: -10° to 120°F (-23° to 60°C)
- Breaking: Mechanical
- Bearings: Ball bearings / bronze bushings
- Mounting: Includes wall mount bracket VC5100-1 with VC5101-1 support strut

**ACCESSORIES**

- Video Switchers - 4, 8 or 16 input models
- Distribution Amplifiers - to display one camera on several monitors
- Equalizing Amplifiers - for long cable runs
- Fiber Optic Link - Fiber optic video transmission for cable runs up to 1 mile typ. Call factory for longer cable runs.
- Time / Date Generators
- Data Overlay Modules
- VCR Recording
- Many, Many More.

HOW TO ORDER: Select the appropriate symbols and build a part number as shown:

**EXAMPLE:**

**VSPTE-VSE5011-2**

**PAN & TILT OPTIONS**

VSPTE - Explosion proof pan/tilt, 120V AC supply. Rated for use in Class I, Div 1, Groups B, C & D. Class II, Div 1, Groups E, F & G and NEMA 4 areas.  
 VEPTTE - Flame proof pan/tilt, 230V AC supply. Rated for use in EEx d II C T6 and IP66 areas.

**VIDEO OUTPUT FORMAT**

VS - North American Standard  
 VE - European Standard

**CAMERA OPTIONS**

B - B&W camera  
 C - Color camera  
 L - Low Light B&W camera  
 I - IR (Near) B&W camera  
 E - Ethernet camera

**CAMERA APPLICATION**

5 - Surveillance with aluminum enclosure

Ethernet Camera PSU Options

3 - No separate PSU required. PSU is integral to Ethernet Controller.

B&W, Color, Low Light B&W, IR (Near) Camera PSU Options

0 - Non WP or EXP camera power supply  
 2 - EXP or FP camera power supply. EXP PSU enclosure is rated Class I, Div. 1, Groups C & D.

**PAN/TILT CONTROLLER**

2 - Joy Stick Controller - Manual Control of Pan, Tilt.  
 3 - Ethernet Controller - Includes Additional Control Box & Software For Ethernet Control of Pan & Tilt. Reference Datasheet TA9645-1.

**ADDITIONAL OPTIONS**

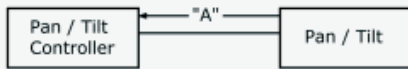
1 - No additional options  
 3 - Spray Ring

**LENS OPTION AND APPROXIMATE LENS VIEW ANGLES**

1 - Manual iris lens with standard view angle, 41°H x 31°V  
 2 - Manual iris lens with wide view angle, 69°H x 53°V  
 3 - Manual iris lens with wide view angle, 58°H x 45°V  
 6 - Manual iris lens with narrow view angle, 7°H x 5°V  
 7 - 6x Zoom Lens with Auto Iris, 8 - 48mm FL  
 Provides view angles: 43°H x 33°V at 8mm  
 8°H x 6°V at 48mm  
 8 - Manual iris lens with narrow view angle, 3.5°H x 2.5°V  
 9 - Ethernet Camera With 18X Zoom Lens and Auto Iris, 4.1 - 73.8 mm FL  
 Provides view angles: 2.7°H X 2°V at 4.1mm  
 48°H X 36°V at 73.8mm

**CABLING REQUIREMENTS**

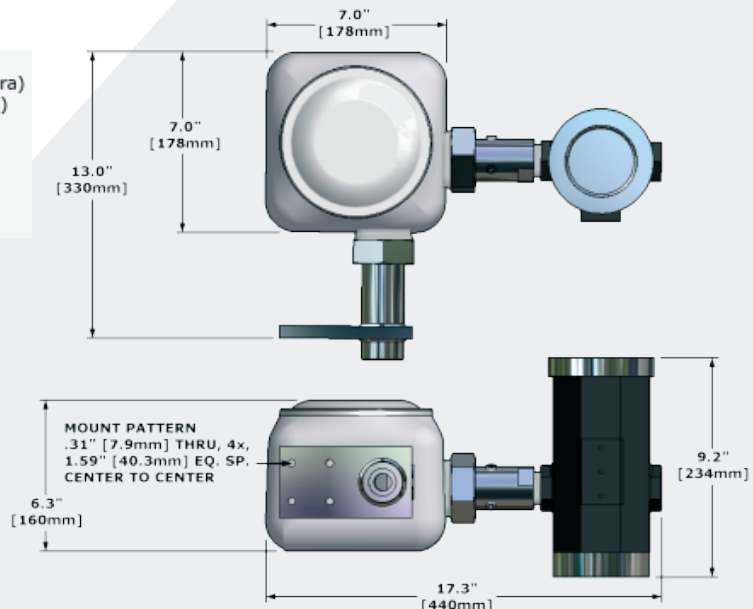
9 conductor cable (models without a zoom lens camera)  
 12 conductor cable (models with a zoom lens camera)



**Maximum Recommended Cable Distance "A"**

AWG	120v MODEL	230v MODEL
18	800ft (244m)	4000ft (1220m)
16	1200ft (365m)	6000ft (1830m)

(Assuming a 10% (max) Voltage drop)



**Mounting Brackets**

All systems include a VC5100-100 wall mount bracket.

**Reading Office**

Cutbush Park, Danehill, Lower Earley,  
 Reading, Berkshire. RG6 4UT. UK.  
 Tel: +44 (0)118 9311188  
 Email: info@able.co.uk

**Aberdeen Office**

Unit 6 Airside Business Park, Kirkhill Industrial Estate,  
 Dyce, Aberdeen. AB21 0GT. UK.  
 Tel: +44 (0)1224 725999  
 Email: ab@able.co.uk

Internet: www.able.co.uk  
 e-procurement: www.247able.com  
 Registered in England No: 01851002  
 VAT No: GB 417 2481 61

