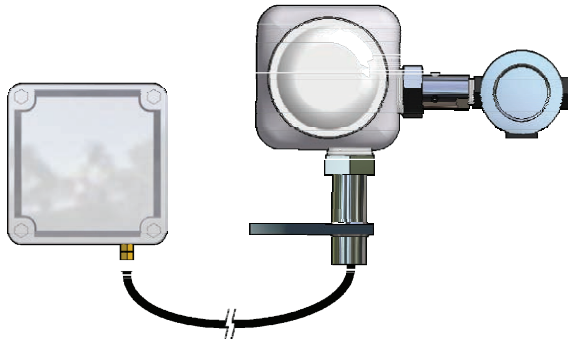


PROCESS TECHNOLOGY

CANTYNET™ PAN/TILT/ZOOM ETHERNET CONTROL MODULE

THE COMPLETE PACKAGE



The CantyNet™ Ethernet Control Module includes everything you need to control a Canty pan & tilt system via remote Ethernet network. The CantyNet™ system is simple to install:

- Connect Control Module to 10/100 Mbps Ethernet network via RJ- 45 jack
- Connect Control Module to pan & tilt via cable supplied with pan & tilt.
- Connect 120V AC supply power to Control Module (230V European models)
- Install software on PC. Win 95/98/NT/2000/XP compatible
- Network administrator assigns IP address to each control box
- Point and click control, viewing for any Canty pan & tilt via remote PC.

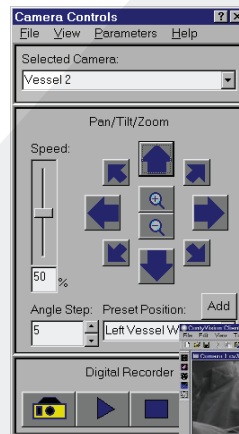
ETHERNET CONTROL SYSTEM

The CantyNet™ Pan/Tilt/Zoom Ethernet Control Module allows the user to control a Canty Pan/Tilt/Zoom camera using a single Ethernet cable via 10/100 Mbps or optional fiber network.

The CantyNet™ Ethernet Control Module can be direct mounted to the pan & tilt, or placed within 20' [6m] of the Canty pan & tilt unit. A single Ethernet cable connects the Canty Ethernet Control Module to an existing Ethernet network, allowing remote viewing and control of a Canty pan & tilt system. Ethernet Control Modules are available in WP, IP66, explosion proof or flame proof enclosures in both 120 V AC, 230 V AC models.

After installing the CantyNet™ software on your Windows based PC, which is included with each Ethernet Control Module, any user can use simple, point and click menus to remotely view, control any Canty camera from their desktop. CantyNet™ control software is provided with a 5 client license per module which allows multiple users to simultaneously view, control a Canty pan & tilt camera. Site license upgrades are available.

Canty also offers a variety of surveillance equipment to meet all your needs.



Replaces Existing Telemetry Systems



Ordering Information

HOW TO ORDER: Select the appropriate symbols and build a part number as shown:

EXAMPLE:

PTZ-1000

CantyNet™ Pan / Tilt / Zoom
Control Module

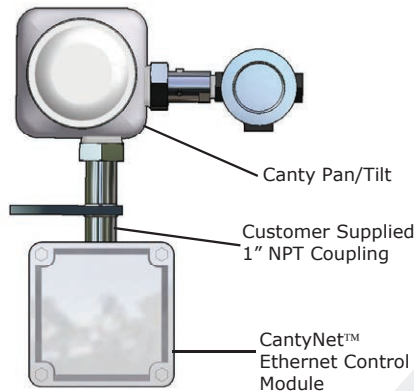
Environmental Rating

- 1 - NEMA 4 WP
- 2 - IP66
- 3 - Explosion Proof Class I, Div. 1,
Groups B,C and D
- 4 - Flame Proof EE xd IIC T6

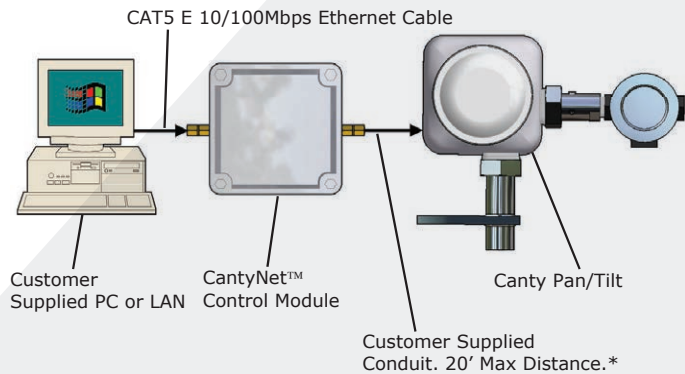
Input Voltage

- 0 - 120V AC, 60Hz
- 1 - 230V AC, 50 Hz

PTZ - Direct Mount To Pan & Tilt
(Customer Supplied PC, Hub Not Shown)



PTZ - Remote Mount To Pan & Tilt
(Optional Customer Supplied Hub Not Shown)



Reference Data Sheets: TA6898-1 - Canty Surveillance Cameras
TA10844-100 - Explosion Proof Pan & Tilt System

* Consult factory for longer distances
Consult your network administrator for your maximum hub repeater count

Reading Office

Cutbush Park, Danehill, Lower Earley,
Reading, Berkshire. RG6 4UT. UK.
Tel: +44 (0)118 9311188
Email: info@able.co.uk

Aberdeen Office

Unit 6 Airside Business Park, Kirkhill Industrial Estate,
Dyce, Aberdeen. AB21 0GT. UK.
Tel: +44 (0)1224 725999
Email: ab@able.co.uk

Internet: www.able.co.uk
e-procurement: www.247able.com
Registered in England No: 01851002
VAT No: GB 417 2481 61

