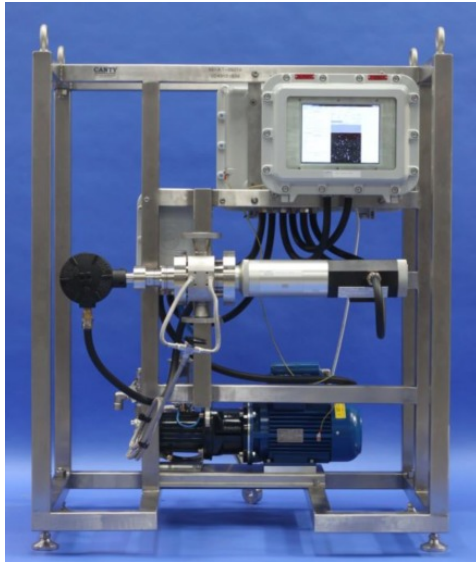


INFLOW™ SKID

*The CANTY
ADVANTAGE!*

**OIL IN WATER / WATER IN OIL / MULTIPHASE OIL /
PRODUCED WATER / OIL SANDS MEASUREMENT SYSTEM**



THE CANTY INFLOW

Combining the latest in CCD Ethernet camera technology, with Canty fused glass technology, high intensity lighting and CANTYVISIONCLIENT™ software, the INFLOW™ provides real time inline analysis (size & concentration) of Oil and Solids (Sand) in Water, or Water and Solids in Oil.

JM Canty's vision based technique works on the fundamental principle of presenting the fluid (water / oil stream) between a high intensity light source and microscopic camera. The captured images are then analyzed by the CANTYVISIONCLIENT™ software, where the suspended particulate (oil, water, solids, gas bubbles) is measured under a number of different parameters to provide size, shape and concentration data. Software filters (size / shape) are applied so oil / water, solids, and air bubbles are individually & simultaneously analyzed.

FEATURES

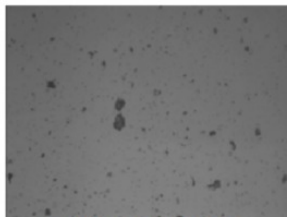
- Ethernet Connectivity (Remote Monitoring / Support)
- Intuitive Software Interface
- Data Outputs in the Form of Excel Database
- Control Output Options via OPC / 4-20mA
- Fused Glass Process Barrier
- High Intensity Lighting
- Integral Jet Spray Ring (Cleaning)
- FM EXP / ATEX FP Options

ADVANTAGES

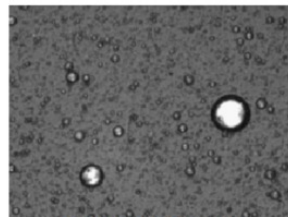
- Real Time Inline Measurement (No Sampling)
- Center Pipeline Measurement (Most Representative)
- Visual Verification
- Simultaneous Measurement of Oil / Water and Solids
- Flow Rates to 9ft/s (water stream)
- Up to 5% Particle Concentration (Higher for Droplet Size Measurement Only)
- +/-1% Accuracy of Calibrated Scale

APPLICATIONS

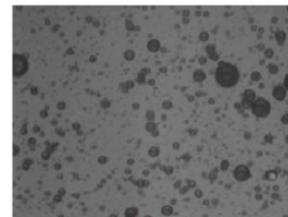
Oil in Water: Environmental Regulations, Separation Equipment Performance Analysis & Optimization
Solids in Water: Avoid Well Plugging (WFI), Limit Equipment & Pipeline Clogging / Erosion, Separation Equipment Performance Analysis & Optimization
Water / Solids in Oil: Adherence to Pipeline & Refinery Standards, Limit Equipment & Pipeline Erosion, Separation Equipment Performance Analysis & Optimization



SAND IN WATER



WATER IN OIL



OIL IN WATER

Registered Address

ABLE Instruments & Controls Ltd
Cutbush Park, Danehill, Lower Earley,
Reading, Berkshire, RG6 4UT. UK.

Reading

Tel: +44 (0)118 9311188 | Email: info@able.co.uk

Aberdeen

Tel: +44 (0)1224 725999 | Email: ab@able.co.uk

Web

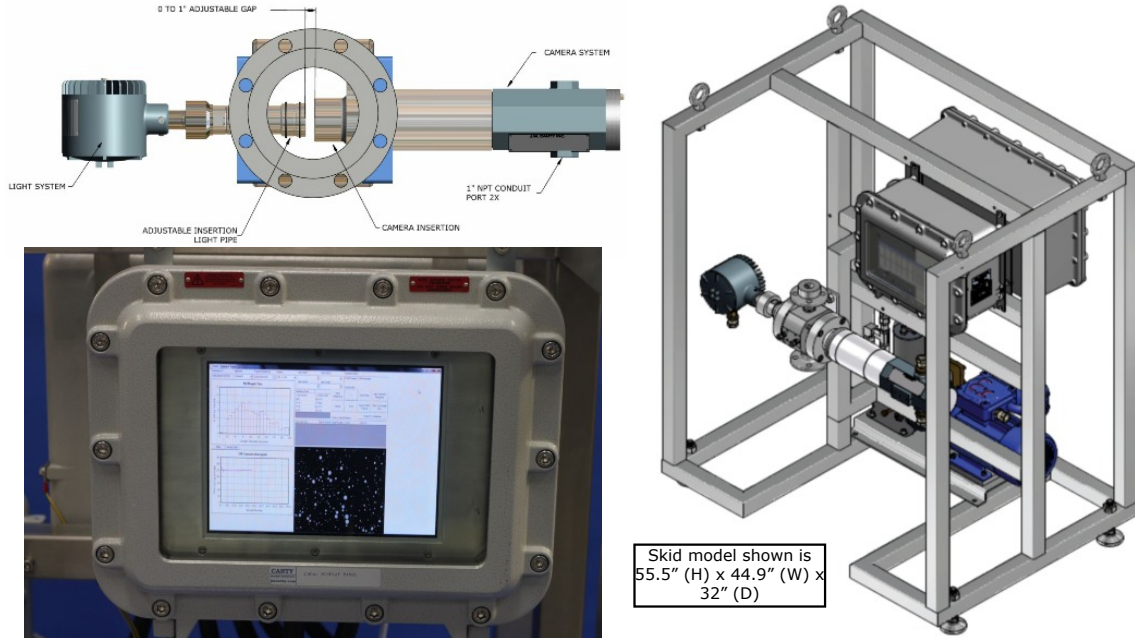
able.co.uk

E-commerce

247able.com



DIMENSIONAL INFORMATION



Skid model shown is 55.5" (H) x 44.9" (W) x 32" (D)

Ordering Information

HOW TO ORDER: Select the appropriate symbols and build a part number as shown:

EXAMPLE:

S V O C C 1 1 1 A A 1 V

APPLICATION O - Oil In Water M - Multiphase W - Water in Oil	INTERNAL SEAL MATERIAL B - BUNA N - NEOPRENE V - VITON® K - KALREZ® S - SILICONE C - CHEMREZ® E - EPDM										
SYSTEM CLASSIFICATION C - InFlow with Computer/Display & Spray Pump P - InFlow with Spray Pump. User supplies remote PC.	ENVIRONMENTAL RATING 1 - NEMA 4 WEATHERPROOF 2 - IP 66 3 - EXPLOSION PROOF 4 - FLAME PROOF										
CONNECTION TYPE B - Swagelok® C - Flange (ANSI/DIN) E - NPT (Female)	ANSI OR DIN PRESSURE RATING / FLANGE PATTERN <table border="1"> <thead> <tr> <th>ANSI</th> <th>DIN</th> </tr> </thead> <tbody> <tr> <td>A - 150 PSI</td> <td>D - 10 BAR</td> </tr> <tr> <td>B - 300 PSI</td> <td>E - 16 BAR</td> </tr> <tr> <td>C - 600 PSI</td> <td>F - 25 BAR</td> </tr> </tbody> </table> Consult factory for pressure rating up to 10,000 PSI.	ANSI	DIN	A - 150 PSI	D - 10 BAR	B - 300 PSI	E - 16 BAR	C - 600 PSI	F - 25 BAR		
ANSI	DIN										
A - 150 PSI	D - 10 BAR										
B - 300 PSI	E - 16 BAR										
C - 600 PSI	F - 25 BAR										
CONNECTION SIZE <table border="1"> <tbody> <tr> <td>0 - 1/2" (12.7mm)</td> <td>4 - 4" (100mm)</td> </tr> <tr> <td>1 - 1" (25mm)</td> <td>6 - 6" (150mm)</td> </tr> <tr> <td>5 - 1.5" (38mm)</td> <td>8 - 8" (200mm)</td> </tr> <tr> <td>2 - 2" (50mm)</td> <td>9 - 10" (254mm)</td> </tr> <tr> <td>3 - 3" (80mm)</td> <td>A - 12" (305mm)</td> </tr> </tbody> </table>	0 - 1/2" (12.7mm)	4 - 4" (100mm)	1 - 1" (25mm)	6 - 6" (150mm)	5 - 1.5" (38mm)	8 - 8" (200mm)	2 - 2" (50mm)	9 - 10" (254mm)	3 - 3" (80mm)	A - 12" (305mm)	INPUT POWER A - 120 V AC / 60Hz / 250W B - 230 V AC / 50Hz / 250W
0 - 1/2" (12.7mm)	4 - 4" (100mm)										
1 - 1" (25mm)	6 - 6" (150mm)										
5 - 1.5" (38mm)	8 - 8" (200mm)										
2 - 2" (50mm)	9 - 10" (254mm)										
3 - 3" (80mm)	A - 12" (305mm)										
WETTED METAL MATERIAL 1 - 316L Stainless Steel 2 - Hastelloy® C276 or equal 3 - Hastelloy® C-22® or equal 4 - Carbon Steel	NON-WETTED METAL MATERIAL (PRESSURE BEARING) 0 - Carbon Steel 1 - 300 Series Stainless Steel										

Registered Address

ABLE Instruments & Controls Ltd
 Cutbush Park, Danehill, Lower Earley,
 Reading, Berkshire, RG6 4UT. UK.

Reading

Tel: +44 (0)118 9311188 | Email: info@able.co.uk

Aberdeen

Tel: +44 (0)1224 725999 | Email: ab@able.co.uk

Web

able.co.uk

E-commerce

247able.com

