

V-TRAKKA DATA SHEET

v-Trakka™

Christmas-tree Valve Continuous-position Transmitter



- 2-Wire EEx d Loop-powered Transmitter
- Continuous Direct Measurement of Tree Valve-position;
- Universal Design; Retrofit to most common surface-trees, including:
 - Cameron Baker-Hughes Vetco
 - Safoco Wood Group Presco-Dyne
- Extremely stable and robust design eliminates dependence on problematic limit switches and inferred pressure measurements.

Technical Detail

Power / Signal

24VDC, Loop-Powered, 4-20mA

Valve Collar Sizes

65mm To 76mm, & 115mm To 126mm

Transmitter Cert

Atex Eex D, Ip67, -20°C To +50°C

Valve-Stroke Range

Up To 200mm & 255mm

Cover

316 St/Steel

Bracket/Base

316 St/Steel

Transmitter

316 St/Steel

Window

Toughened Glass

Application

Many operators no longer use limit switches for control of Xmas tree valves as they are considered unreliable and unsuitable; limit switch technology only provides valve status as fully open or fully closed with no continuous feedback.

To compensate for this, an alternative method has been to infer the position of the valve by trending the pressure in the hydraulic lines. However, accuracy of the pressure measurement versus valve position is poor, as is reliability, due to transmitter blockages that require maintenance. Drift causes a problem where open or close pressures are not linear and not always repeatable.

The consequences of incorrect valve position control can include process failures, shutdown and most importantly impact on a safe working environment. Such loss of production can incur massive costs.

Continuous measurement of valve position allows monitoring of speed and uniformity of movement, giving diagnostic insight to the condition of the valves and hydraulic feeds, with failure prediction.

ABLE v-Trakka™

For a continuous direct valve position measurement, ABLE have developed a universal valve position transmitter (v-Trakka) which can be retrofitted to most leading types of surface Xmas tree valves to provide an accurate and repeatable 4-20mA output correlating to the actual physical valve position.

Once installed, the v-Trakka requires no maintenance.

The v-Trakka is a compact, lightweight mechanical instrument suitable for installation in the harsh well environment. The 316 st/st cover and rigid base provides significant protection from dirt and everyday impacts. The cover also provides added safety by preventing personnel from standing in front of the valve stem. The high-viz position marker can be viewed through the toughened-glass window slots.

Designed to replace basic limit switches & high maintenance pressure monitoring, the v-Trakka assembly is also available with ABLE limit switches as optional extras or temporary logic sensors where existing control systems are not yet analogue-ready.

Email: Vtrakka@Able.co.uk

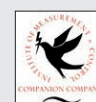
Reading Office

Cutbush Park, Danehill, Lower Earley,
Reading, Berkshire. RG6 4UT. UK.
Tel: +44 (0)118 9311188
Email: info@able.co.uk

Aberdeen Office

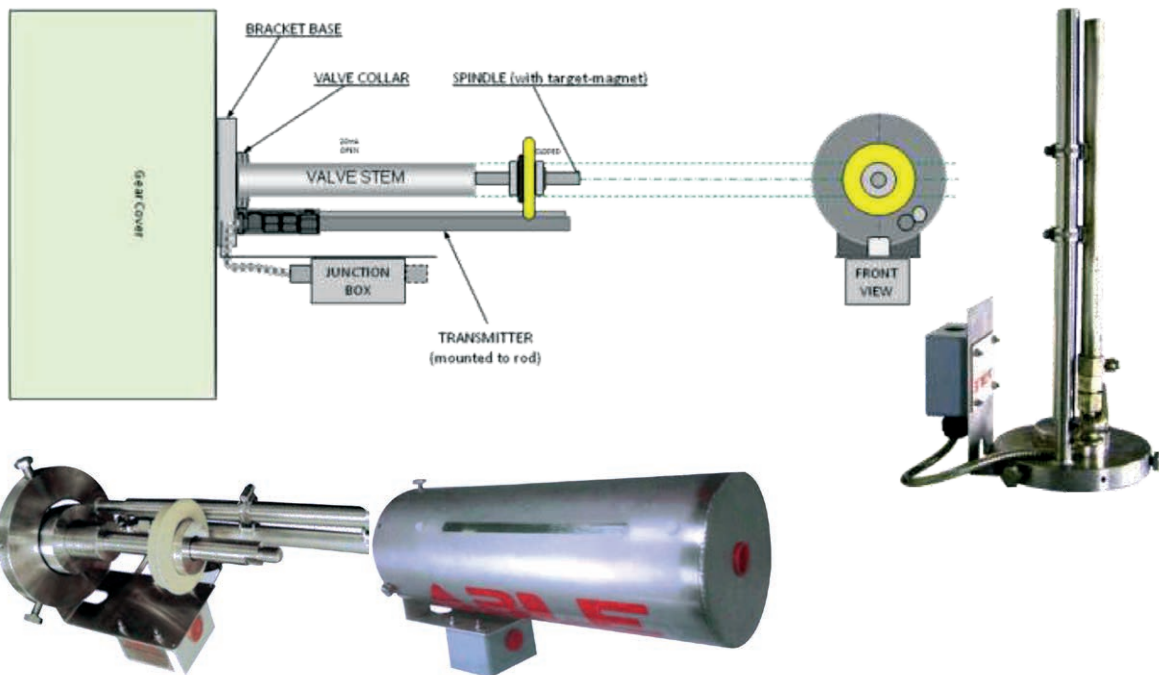
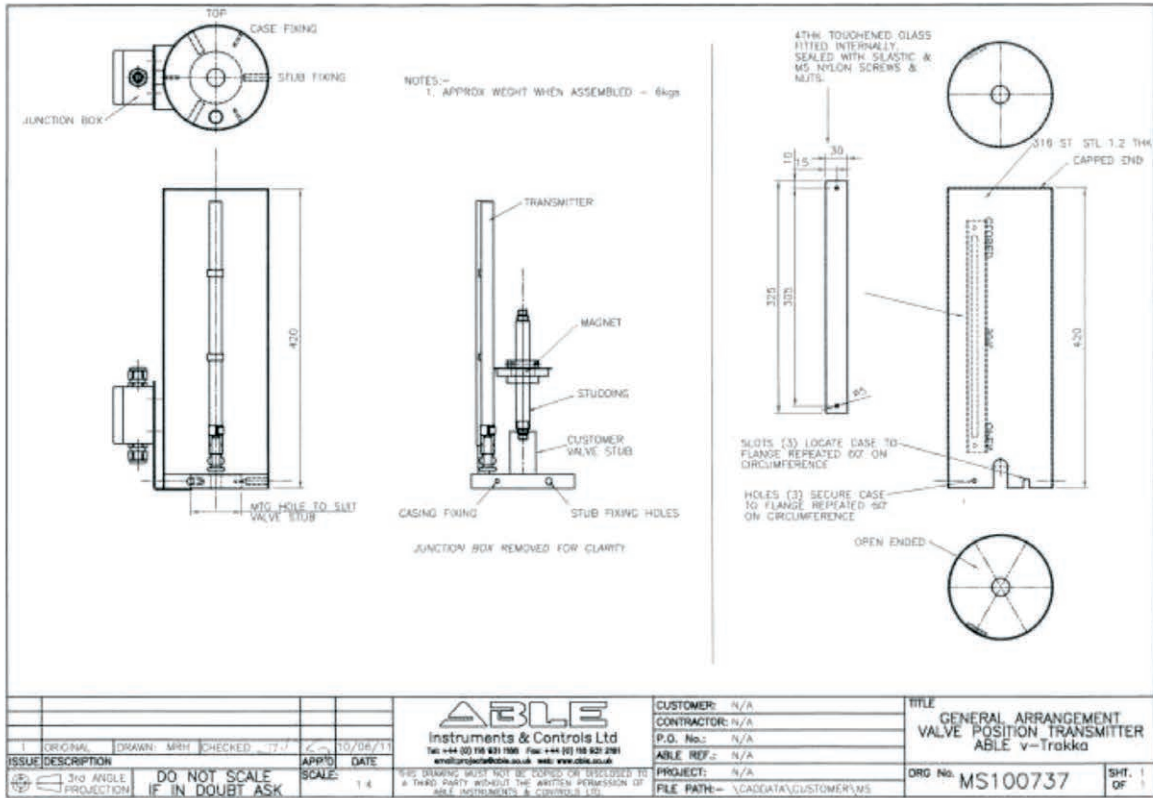
Unit 6 Airside Business Park, Kirkhill Industrial Estate,
Dyce, Aberdeen. AB21 0GT. UK.
Tel: +44 (0)1224 725999
Email: ab@able.co.uk

Internet: www.able.co.uk
e-procurement: www.247able.com
Registered in England No: 01851002
VAT No: GB 417 2481 61



v-Trakka™

Christmas-tree Valve Continuous-position Transmitter



Reading Office

Cutbush Park, Danehill, Lower Earley,
Reading, Berkshire. RG6 4UT. UK.
Tel: +44 (0)118 9311188
Email: info@able.co.uk

Aberdeen Office

Unit 6 Airside Business Park, Kirkhill Industrial Estate,
Dyce, Aberdeen. AB21 0GT. UK.
Tel: +44 (0)1224 725999
Email: ab@able.co.uk

Internet: www.able.co.uk
e-procurement: www.247able.com
Registered in England No: 01851002
VAT No: GB 417 2481 61

